

Elegant profile

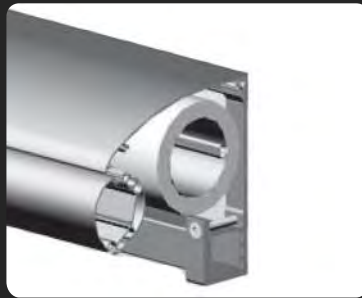


Optional Sun and Wind Sensor

*The PR220 is a semi cassette awning designed and engineered with aesthetics and function in mind. Attention to technical detail ensures years of trouble free operation.*

## PR220

- The extremely low profile of the cassette integrates perfectly with the façade of the building.
- The awning has an aluminium extruded hood with strong cast aluminium end covers providing protection against dirt, grime and poor weather conditions.
- When the awning is extended, the strong spring assembly in the arms enables maximum fabric tension to be maintained.
- The PR220 can be equipped with electrical operation using a tubular motor.
- Optional sun, wind, rain and motion sensors for the ultimate in comfort.
- Choice of high profile front rail in lieu of standard round front rail.
- Manual operation using a crank and a gearbox is also available.
- With a five year guarantee, you can expect that only the best materials are used and a high level of importance is placed on providing the perfect finish.



## Technical Information:

- The Arms:** — Extruded powder coated aluminum .
- The Hinges:** — High pressure cast aluminum  
— Durable slide bearings of toughened bronze with a PTFE sliding layer  
— The most heavily loaded parts are thermally treated
- Springs and Steel cables:** — Zinc plated high quality spring steel.  
— Grease impregnated zinc plated steel cables ensure an even division of power
- The Shoulder:** — Extruded powder coated aluminum .  
— Angle range from 10° to 45°.  
— Design eliminates flapping and dropping of arms
- Minimum Size:** — 2 meter in one part with two arms.
- Maximum Size:** — 6 meter in one part with two arms.  
— 7 meter in one part with three arms.  
— 12 meter one or two parts with four arms
- Minimum Width:** — 2 meters
- Maximum Width:** — 6 metres with two arms  
7 metres with three arms  
Connectable to 12 metres with four arms
- Extensions:** — Five standard sizes: 1.5m, 2m, 2.5m, 3m, 3.5m

